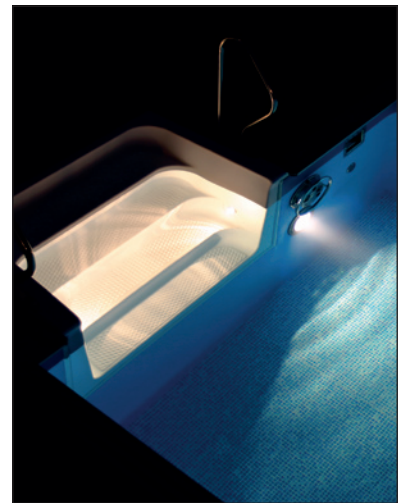
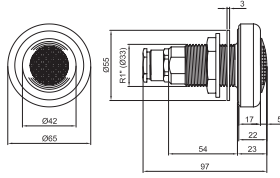


SPA-LIGHTING 50W



Item no. 12265



- **Made of AISI 316L acid-resistant stainless steel** - For optimum quality and life.
- **Polished front** - For optimum finish.
- **Halogen bulbs 50 W** - For pleasant lighting.
- **For fitting in pool walls, stairs, fountains etc.** - Suits all types of installations.
- **Tested and certified by a Notified Body** - Important for product safety.

Spa light 50W, 12V, IP68

Item no.

12265 This unit is supplied as standard with 2.5 m heat resistant silicon cable, fittings and gaskets.

12265M15 As above with 15 m cable.

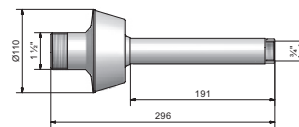
Accessories

Inlets for spa light

Item no.

12631 For concrete pools.

12632 For liner pools.



Cable conduit

Item no.

12330 Protects the cable between the junction box and the lamp unit, length 900 mm.

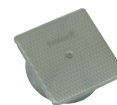
12854 Jointing sleeve internal 3/4" PVC. For extension of cable conduit.



Junction box

Item no.

12310 Cable seal in the base, with attachment for cable conduit and connection block.



Safety transformer

Item no.

12340 Transformer 300W, 12/230V, IP54 with built-in fuse.

12373 Transformer 60W, 12/230V, IP54 with built-in fuse.

