

Pool light 300

For pool with liner or concrete pool

12V~ 300W IP68

Item no. 12250: Pool light type 300A, concrete
Item no. 12270: Pool light type 300CA, liner



For use only when immersed in water. The pool light shall be connected through an isolation transformer 12V 300W.
Pay attention to local electric directions as to the placing of the junction box.

Install the niche in the pool wall. Apply some waterproof grease in the threads of the niche.
Thread the cable conduit in the niche and in the junction box. The thread shall be sealed with e.g. thread tape.
The cable conduit shall be placed so that the bend radius is not below 100 mm.

For the 300A: The front edge of the niche shall be in line with the concrete wall (see sketch below).

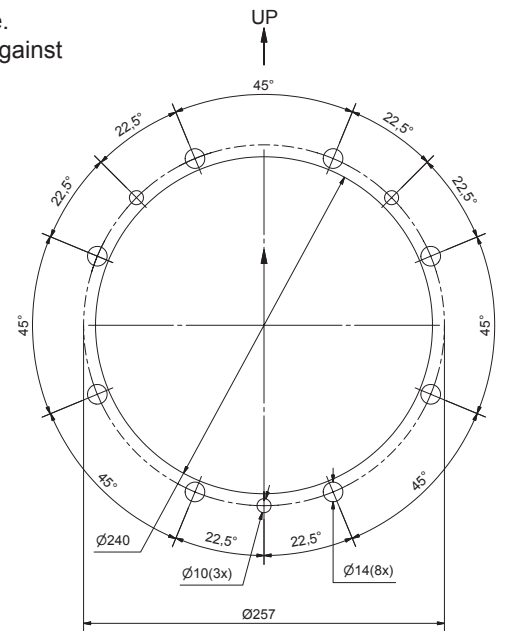
For the 300CA: After fitting the liner, fill water up to about 10 cm below the niche.
Fit the plastic front ring and the gaskets to make the liner tight against the niche, (see exploded view below).

Insert the cable in the conduit and connect to the junction box.
Tighten the fitting in the junction box to seal the cable.
Place the socket on the cable of the lamp where it runs through the cable gland of the niche and tighten this cable gland.
Wrap excess cable behind the lamp and assemble the lighting unit in the niche.

The light must be completely covered with water before lighting.
When exchanging the bulb, the o-ring shall be exchanged as well.
If the external cable or cord of this lighting is damaged, it shall be exclusively replaced by a service agent or a similar qualified person.

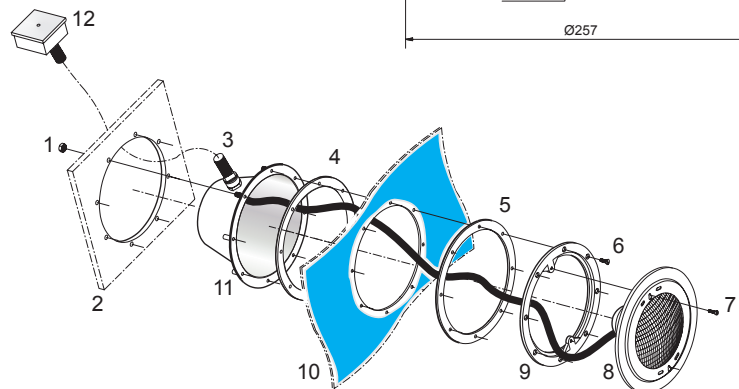
Follow the instructions stated below for the water quality:

Chlorine content: max 3 mg/l (ppm)
Chloride content: max 150 mg/l
pH-value: 7,2-7,8
Alkalinity: 60-120 mg/l (ppm)
Calium hardness: 200-1000 mg/l (ppm)



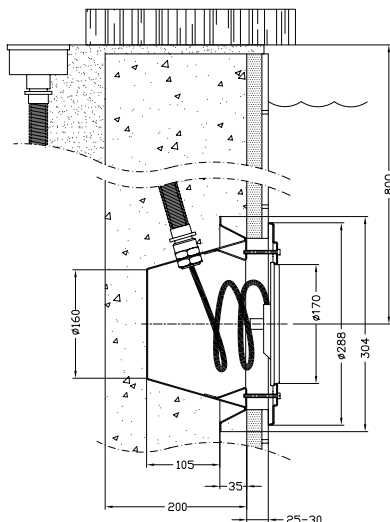
Exploded view pool light 300CA

- 1 Nut M6 + Washer (3 pcs)
- 2 Framework
- 3 Conduit
- 4 Gasket self-adhesive
- 5 Gasket
- 6 Countersunk screw M6x20 (8 pcs)
- 7 Recessed screw M5x20 (2 pcs)
- 8 Lighting unit
- 9 Plastic front ring
- 10 Liner
- 11 Niche
- 12 Junction box



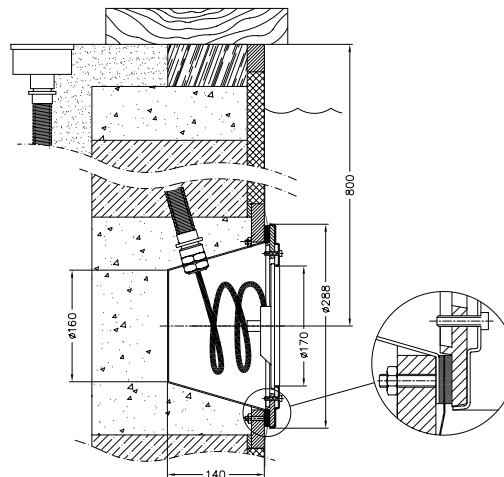
Type 300A

Wall type: 200 mm tiled concrete



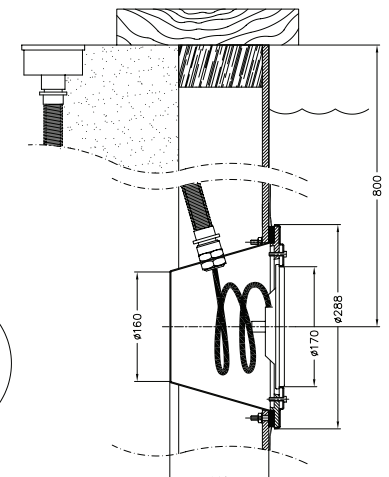
Type 300CA

Wall type: building blocks with insulation and liner



Type 300CA

Wall type: plywood on frame work or galvanized steel



Installation instruction